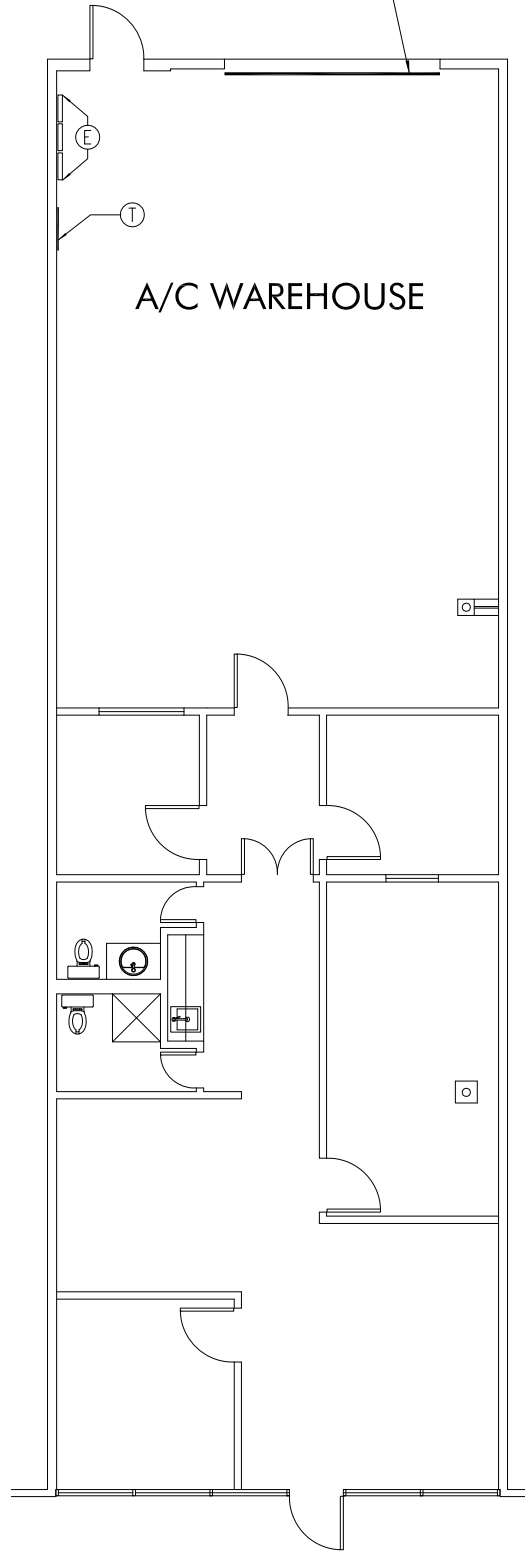


12'W x 10' O.H. DOOR



OVERHANG

N.O.I.

Office Sq. Ft.	1,089
Warehouse Sq. Ft.	911
Total Sq. Ft.	2,000
Rail Served	NO
Sprinklered	NO
Floor Level	GRADE
Min. Clear Height	12'

CENTRAL PARK NORTHWEST VII

2501 CENTRAL PARKWAY - SUITE C11 - (C0J)
Houston, Texas 77092

Note: All dimensions are approximate and subject to field verifications.
For additional information:

HarryGendel
Architects
1807 Decatur
Houston, Texas 77007